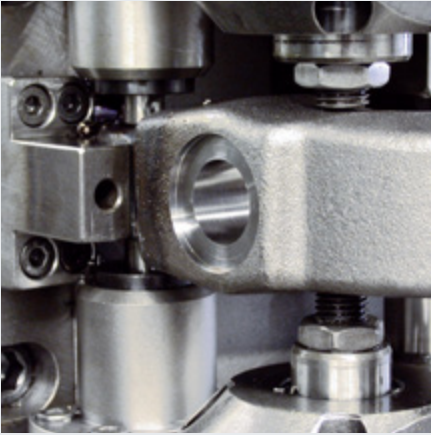


en

THE ORIGINAL

Tools for Professionals
THE ORIGINAL
Made in Germany



Foreword

We are pleased to present you our new catalogue and to introduce you to the company, our products and services on the pages that follow.

We draw your attention in particular to the original HEUER Vice. In 1925 Josef Heuer registered the patent on the drop forge bench-vice with the dual-prism guide track developed by him.

True to the motto „only those who have made history can tell the real story“, we have presented the success story over the years of the world-renowned HEUER Vice for you at the end of the catalogue.

One good product alone is not enough. For this reason we have also developed, along with the bench-vice and its accessories, other items in the same durable mould.

Innovative technology, optimal works procedure and highly qualified staff contribute to the basis of perfect production at Brockhaus Heuer.

Prompt delivery (48 hours after receipt of order as a rule) and personalised technical support from our technical representatives and our competent in-house team are considered standard in our company, as is the maintenance of the high quality of the products. We challenge you to put our achievements to the test!

In the following pages you can acquaint yourselves with our products and trend-setting standards in quality, service and reliability, which our customers have come to put their trust in over the years.

Your BROCKHAUS-HEUER team

Company history	4
HEUER Quality	6
HEUER Vice	8
- Details	10
- With replaceable jaws	12
HEUER Compact	14
HEUER Compact Carrying Case Kit	16
HEUER Protective jaws	18
HEUER protective Jaw-Sets	20
HEUER Collapsible	22
HEUER Lift	24
HEUER Stand-lift	26
HEUER Collapsible-Lift	28
HEUER Rotary-Table	30
HEUER Table-Clamp	32
HEUER rotary clamp	34
HEUER short stroke module	36
History of the bench-vice	38
Sustainable purchasing decision	42
Made in Germany	44
HEUER online	46

FLOURISHING

since 1864

Friedrich Brockhaus founds a „factory shop“ for making iron and brass wire mesh in Kückelheim.

Josef Heuer of Iserlohn registers the patent of his bench-vice.

Debut of „HEUER Front“ at the Leipzig spring fair.

Implementation of protective vice jaws.

Beginning of production of the „HEUER Collapsible-Lift“.

Start-up of powder coating unit.

1864 – 1874

1925 – 1927

1936 – 1957

1969 – 1974

1980 – 1996

2002 – 2005

Foundation of the drop-forge smithy and mechanical workshop in Oesterau.

Start of production of the patented HEUER parallel bench-vice system. Successful debut at the Leipzig autumn fair.

Alternative build of rotary table for the HEUER Vice.

Beginning of production of the „HEUER Lift“.

Conversion of bench-vice production to production centres using welding and cutting robots.

Founding of Brockhaus HEUER GmbH.



Implementation of further robot controlled machining centres.

Expansion of the product range with "HEUER Compact".

Product range extended to include the HEUER rotary clamp.

Investment in a cogeneration unit.

Optimisation of folding, folding and lifting, and compact vice.

2006 – 2007

2008 – 2010

2016 – 2017

2019 – 2020

2021 – 2022 →

Enlargement of the product range by „HEUER Stand-Lift“.

The pick@work workstation assembly system is the first of its kind in the world; it optimizes process sequences and improves manufacturing performance.

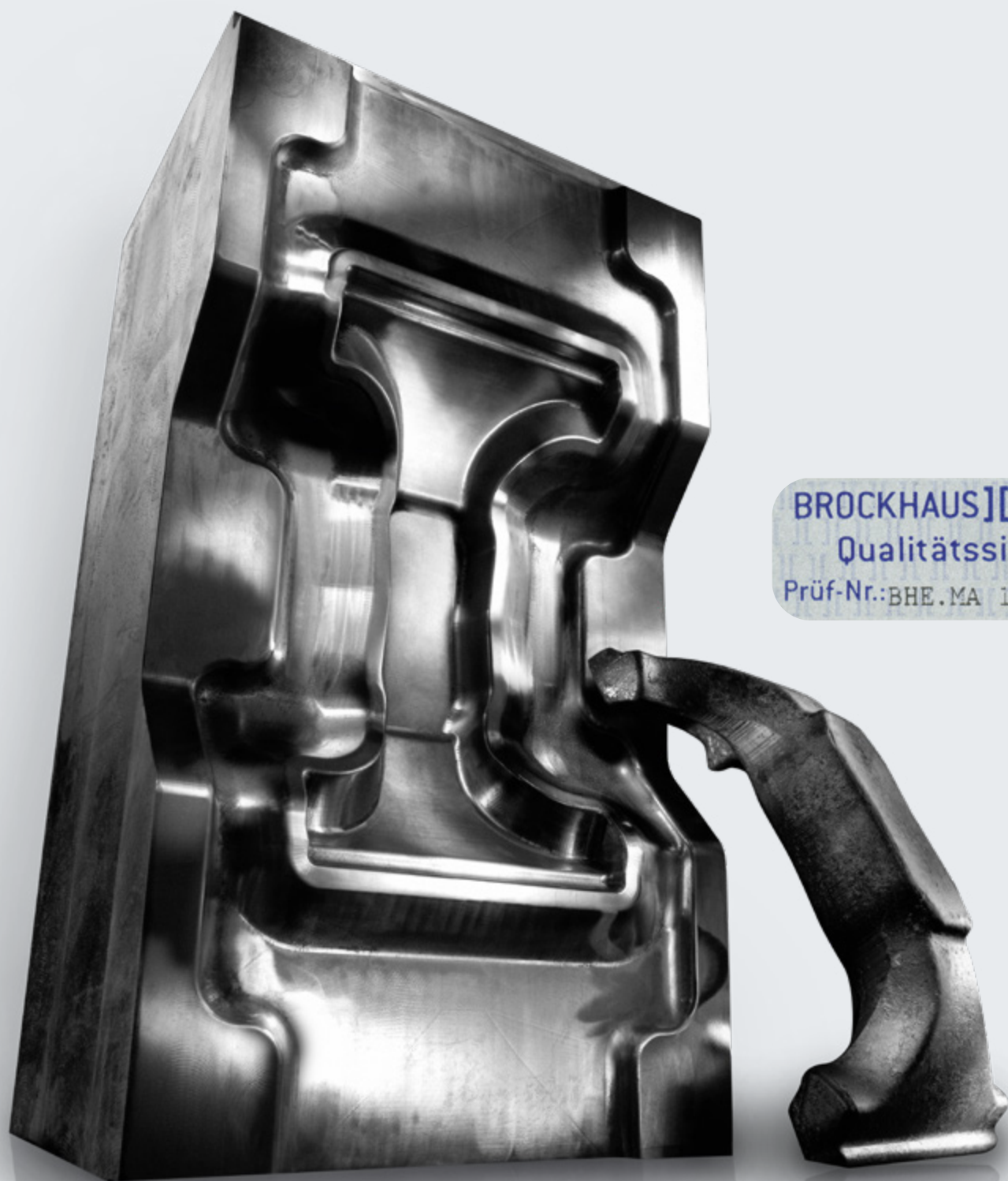
Starting up a new welding robot.

Expansion of the product range with "HEUER Kurzhub-Modul".

Automation of spindle production.

Conversion of the compressed air and hardening equipment to state-of-the-art technology.





BROCKHAUS][HEUER
Qualitätssiegel
Prüf-Nr.: BHE.MA 10-00001

WE LIVE FOR QUALITY

Highest quality standards in production

We rely on the latest technology in our production facilities. Our dynamic work process is subject to stringent quality control in all production areas. Nothing is left to chance. The high quality of our products is ensured through mechanical precision and the technical skills of our employees. Unmistakable Brockhaus Heuer.

We are of course certified for our excellent production and our environmentally friendly packaging concept.

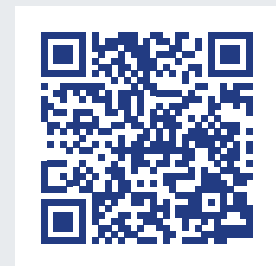
For years, the brand Brockhaus HEUER has brought together the highest levels of quality. And for good reason: because we are committed to our tradition and

our history. Therefore, our approach has to be the following: The best vice on the market comes from Brockhaus HEUER.

For this reason, you will only ever receive tools of certified quality from us. A vice will only go on the market once it has passed our strict quality control tests.

The seal of quality on our products certifies verified Brockhaus HEUER quality. This seal lets you know that you can rely on your tool.

Today, tomorrow and for a lifetime.



Field reports



Quality management



THE ORIGINAL

Made of pure steel



HEUER Vice

The HEUER Vice is a tool of the highest quality. Made purely of steel of guaranteed robustness. On account of its supreme individual components it overwhelms totally – with its reliability, durability and precision.

The drop-forged clamping jaw for example – recently series produced as standard – makes our flagship product so robust that we can guarantee its indestructibility.

Because of its narrow drop-forged guides, it offers an enhanced clamping depth. Internal dual-prism guide track design offers optimal protection against damage and fouling. Large track guide surfaces assure constant, smooth functioning of the guide rails, fully machined to guarantee precision when working on sensitive workpieces.

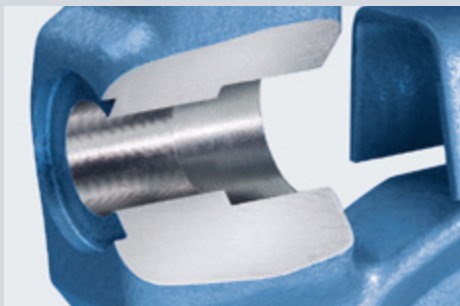
A further advantage is the protected precision spindle bearing, the covered galvanised spindle with double-action, rolled trapezoid thread, as well as the easily adjustable, centrally located guide. This construction creates the high level of precision.

The spindle design also ensures higher strength due to cold forming, low surface roughness on the thread flanks and in the base radius as well as reduced notch sensitivity. Electro-galvanising protects the spindle against corrosion.

The spindle keys with riveted safety rings made of steel afford the required safety. An anvil is integrated in the rear jaw.

The HEUER Vice is a prime example of reliability and durability on account of its

high quality and well-thought-out workmanship. Ideal for rough conditions in the workshop. ... And „Made in Germany“.



The protected precision spindle bearing is located within the drop-forged front jaw of the vice and is therefore optimised against damage and fouling. A feature that only the HEUER Vice offers in this form. The finished, drop



forged guiding brackets keep the safeguard with double internal prismatic guideways accurately on course. It does away with annoying wobbles and instability.

	Width of jaw /mm	Span width /mm	Span depth /mm	Min+max. pipe-gripping jaw span-Ø /mm	Approx. Weight /kg	Item No.
100	125	50	16 – 30	4,5	100 100	
120	150	65	16 – 55	9,0	100 120	
140	200	80	27 – 70	16,0	100 140	
160	225	100	27 – 100	27,0	100 160	
180	225	100	27 – 100	29,0	100 180	



THE ORIGINAL

Details



1. Zinc spindle key with riveted safety rings made of steel

2. Drop-forged front jaw

3. Protected precision spindle bearing

4. Surface-hardened clamping jaws

5. Slim but stable guide tracks (drop-forged) provide greater clamping depth

6. High and optimally distributed clamping force due to centrally arranged and electro-galvanised spindle with double-action, rolled trapezoidal thread for high strength and corrosion protection.

7. Hardened pipe-gripping jaws as production standard

8. Drop-forged rear jaw with specially-formed anvil

9. Strong, forged spindle nut

10. Finished drop forged guiding brackets

11. Guide adjustable by centrally located screw

12. Internal dual-prism guide track preventing fouling and damages. Large track surfaces fully machined to guarantee precision and long service life

THE ORIGINAL

with replaceable, turnable jaws



HEUER Vice

For all heavy-duty conditions and even longer long service life.

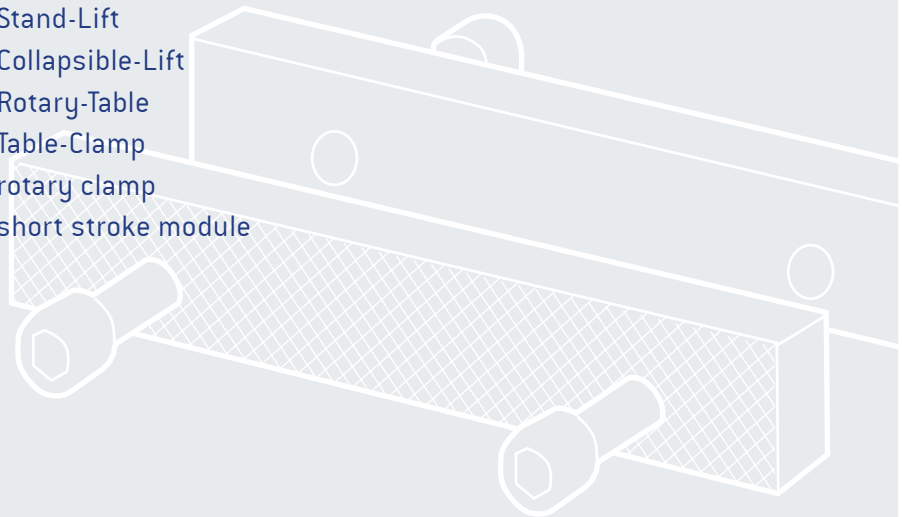
HEUER Vice with screwed-on replaceable jaws - with corrugated and smooth work surfaces, available in sizes 120, 140 and 160 mm.

In order to meet all demands of the workshop we make our well-known steel HEUER Vices also in a special version with replaceable clamping jaws.

These surface-hardened jaws have one corrugated side and one plain side. They are adjustable and replaceable. The threads are located in the frontal jaws so that the valuable vice will not be rendered out of service by any damage to the clamping jaws.

The vices are in the same basic layout and can therefore be combined with all our other accessories.

- » HEUER protective jaws
- » HEUER Collapsible
- » HEUER Lift
- » HEUER Stand-Lift
- » HEUER Collapsible-Lift
- » HEUER Rotary-Table
- » HEUER Table-Clamp
- » HEUER rotary clamp
- » HEUER short stroke module



The replaceable jaws can be used on both sides. They are produced with a corrugated side and a plain side and are each fastened with Allen screws.

Overview of interchangeable jaws

Width/mm	Hole spacing/mm	Height/mm	Thickness/mm	Item No.
115,5	80	18	10	116 115
120,5	80	18	10	116 120
135,5	85	22	12	116 135
140,5	85	22	12	116 140
150,5	105	25	12	116 150
160,5	105	25	12	116 160

Overview of HEUER Vice with replaceable jaws

Width of jaw/mm	Span width/mm	Span depth/mm	Min+max. pipe-gripping jaw span-Ø/mm	Approx. Weight/kg	Item No.
120	150	65	16 – 55	9,0	101 120
140	200	80	27 – 70	16,0	101 140
160	225	100	27 – 100	27,0	101 160

Compact
GRIP FORCE
small, fast, flexible



HEUER Compact

With revolutionary HEUER Quicklaunch

At a weight of just 4.8 kg and with a robust 10 kN clamping force, it is the lightweight choice in its class. Like others in its class, the HEUER Compact 2.0 – the improved version of the proven HEUER Compact – offers outstanding clamping depth and is easy to expand with multiple accessory options from Brockhaus Heuer. The anvil surface has been enlarged by 25% compared to the previous model.

The HEUER Compact got its name thanks to its highly efficient design, which focuses on ensuring the best possible function while maintaining the high level of Brockhaus HEUER quality our customers expect.

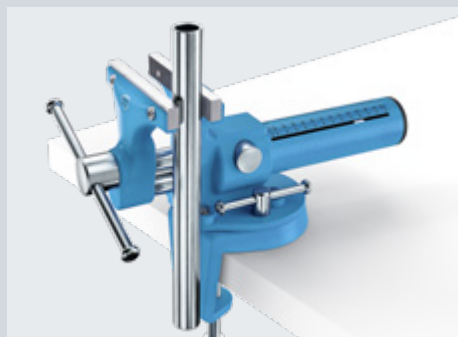
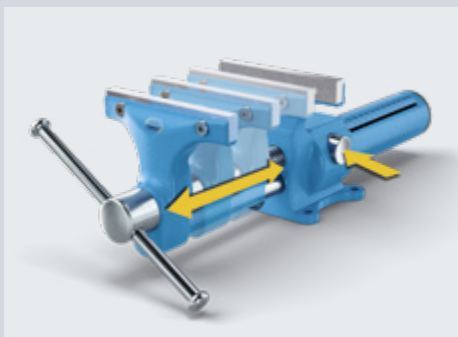
HEUER Quicklaunch

The highlight of the portfolio is the all-new, revolutionary quick adjustment function: HEUER QUICKLAUNCH. It can be used to adjust the HEUER Compact at lightning speed with the push of a button, even with large differences in clamping depth – from 0 to 125 mm in 3 seconds, without activating the tongue. The opening width indicator helps with presetting. The play of the spindle, which is required for optimal quick adjustment, does not influence the parallelism of the jaws during clamping.

The exchangeable, reversible jaws with smooth and grooved clamping surfaces,

provide even more flexibility. The HEUER Compact 2.0 has integrated, grooved tube clamping jaws in the front and rear jaw. Smart extensions are also available, such as the HEUER Table Clamp 100 or HEUER Rotary Clamp 100 and a large selection of magnetic protective jaws for specific applications.

The HEUER Compact 2.0 – our multi-talented vice, in a mobile format.



Width of jaw /mm	Span width /mm	Span depth /mm	Min-max. pipe-gripping jaw span Ø /mm	Tensioning force /kN	Approx. Weight /kg	Item No. Compact
120	125	65	15 – 50	10	4,8	118 001



Width of jaw /mm	Item No. Spare jaws
120,5	116 120

Illustration S. 13

Maximum MOBILITY



HEUER
Quicklaunch



HEUER Compact Carrying Case Kit

Maximum mobility, ideal equipment

The innovative HEUER Compact Carrying Case Kit is the ideal tool for anyone who works mobile.

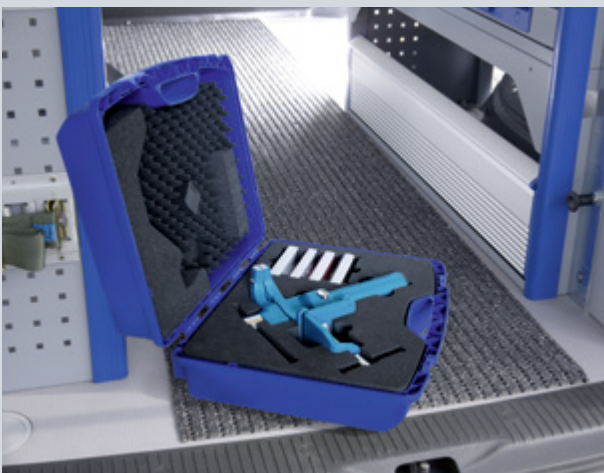
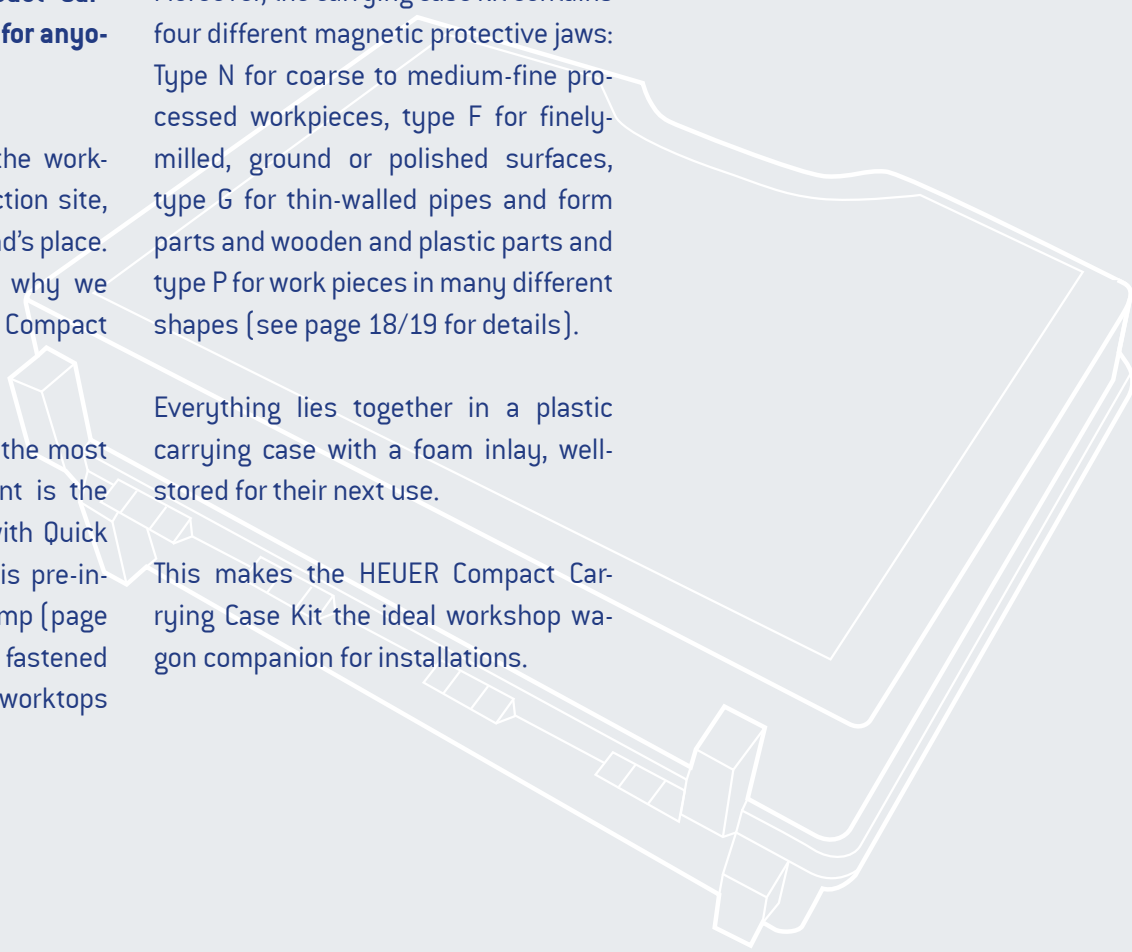
Many jobs are not done at the workbench, rather, at the construction site, in the garden, or even at a friend's place. This is precisely the reason why we have developed the HEUER Compact Carrying Case Kit.

It offers the ideal solution for the most solutions. Its main component is the innovative HEUER Compact with Quick Launch (see page 14/15). It is pre-installed on the HEUER table clamp (page 34/35). This enables it to be fastened on-site on up to 60 mm thick worktops in no time.

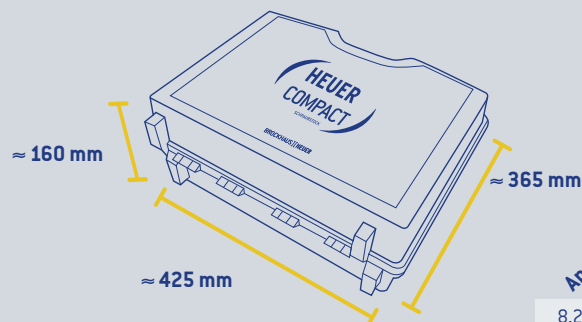
Moreover, the carrying case kit contains four different magnetic protective jaws: Type N for coarse to medium-fine processed workpieces, type F for finely-milled, ground or polished surfaces, type G for thin-walled pipes and form parts and wooden and plastic parts and type P for work pieces in many different shapes (see page 18/19 for details).

Everything lies together in a plastic carrying case with a foam inlay, well-stored for their next use.

This makes the HEUER Compact Carrying Case Kit the ideal workshop wagon companion for installations.

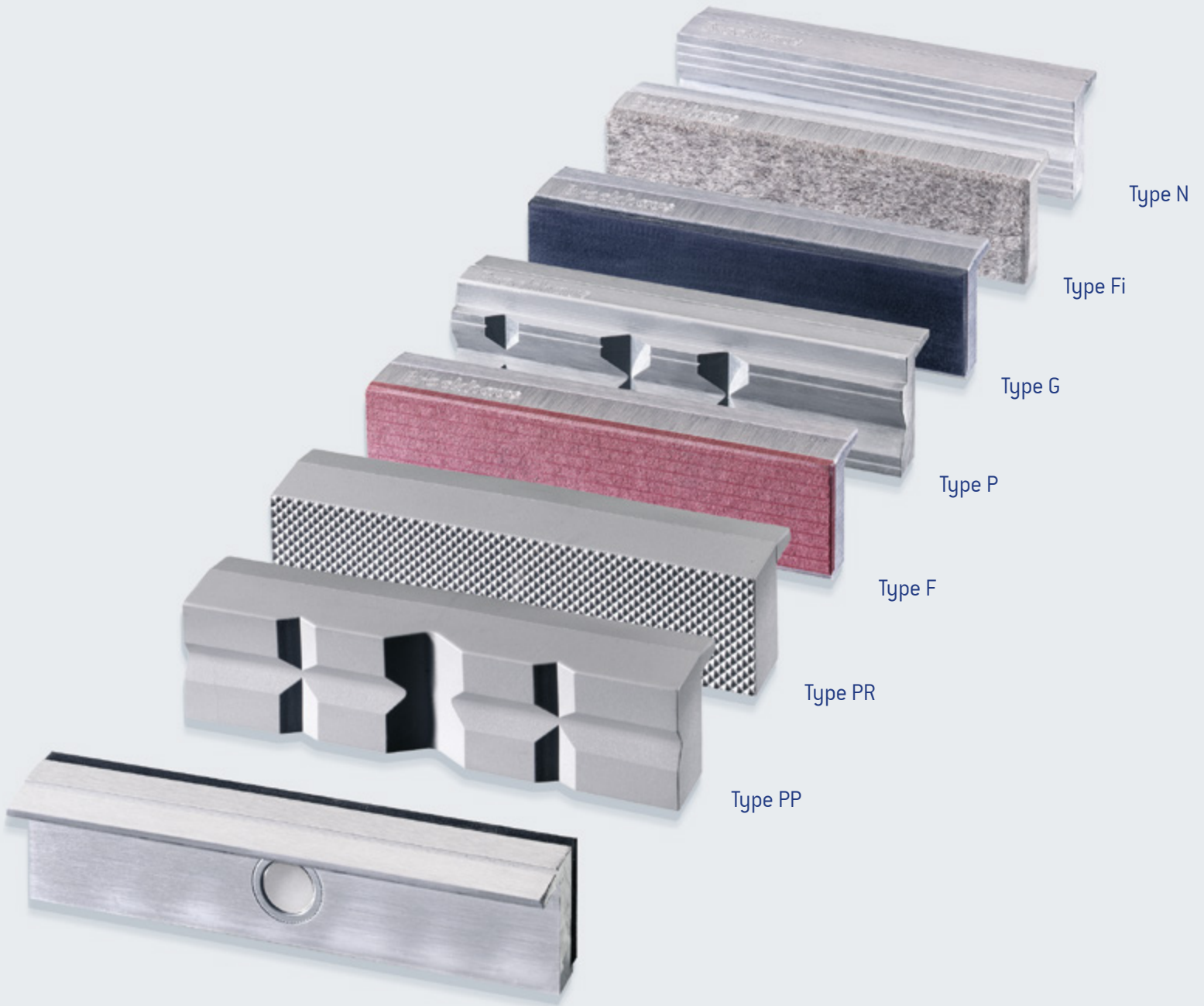


Ready at lightning speed: The compact carrying case kit offers maximum mobility and functionality.



Approx. Weight / Kg
Item No. compact carrying case kit

8,2 118 003



Individual INTERCHANGEABILITY



HEUER protective jaws

Protective jaws have a powerful aluminium base frame or are fully made of polyurethane (type PP and type PR). The profile is rectangular and plano-parallel. The HEUER vice's high precision remains unaffected. Integrated, special magnets securely hold the protective jaws onto the vice. Despite its extremely-high magnetic power, the magnetism does not penetrate to the clamping surface, thereby preventing shavings from being pulled or magnetisation of the workpieces.



Type PP
(Polyurethane prism)

Clamping of delicate round and oval workpieces

The jaws are made of polyurethane. This highly flexible, resistant and non ageing material is tending to assume the original shape after a deformation by pressure. The work pieces are fixed by means of different sized integrated prisms.



Type PR
(Polyurethane grooved)

Clamping of all types of delicate workpieces

The material properties are of identical type as the PP-design. The corrugation of the jaws grips the surface without damaging it.



Type F
(Fibre)

Clamping of workpieces with finely machined or polished faces

The faces of the jaw blocks are special abrasion of layers of fibres. There is no deformation of the faces even when clamping warm workpieces.



Type P
(Prism)

Clamping workpieces into many different shapes

The jaws are made of aluminium with a hardness between copper and lead. A horizontal V-block and three vertical prisms in two different sizes allow for round and oval workpieces to be clamped. The 90° milled slot on the upper part of the jaws allows for flat material to be horizontally clamped without any issues.



Type G
(Rubber)

Clamping of thin walled tubes and shaped pieces, wood and plastic parts

The clamping faces are produced from a special synthetic rubber. Three layers of a canvas material oppose the natural spring tendency of the rubber during the clamping process. The workpieces are held secure even when very low forces are applied.



Type Fi
(Felt)

Clamping of extremely delicate workpieces

The faces of the jaw blocks are special abrasion resistive felt that matches closely the contours of the workpieces. Even the most delicate workpieces are held securely without any damage.



Type N
(Neutral)

Clamping of rough to medium machined workpieces

The jaw blocks are made out of Aluminium and have a hardness factor between that of copper and lead. 6 grooves hold the workpieces secure. A deeper groove serves to hold shafts and pins etc. secure.

Article number summary (available in pairs)

Width of jaw in mm	Type PP	Type PR	Type F	Type P	Type G	Type Fi	Type N
100	108 100	107 100	111 100	109 100	112 100	113 100	110 100
115	–	–	–	109 115	112 115	113 115	110 115
120	108 120	107 120	111 120	109 120	112 120	113 120	110 120
125	–	–	111 125	109 125	112 125	113 125	110 125
135	–	–	–	–	112 135	113 135	–
140	108 140	107 140	111 140	109 140	112 140	113 140	110 140
150	–	–	111 150	109 150	112 150	113 150	110 150
160	108 160	107 160	111 160	109 160	112 160	113 160	110 160
180	–	–	111 180	109 180	112 180	113 180	110 180

Individual INTERACTION

Practically stowed



HEUER Protective Jaw Sets

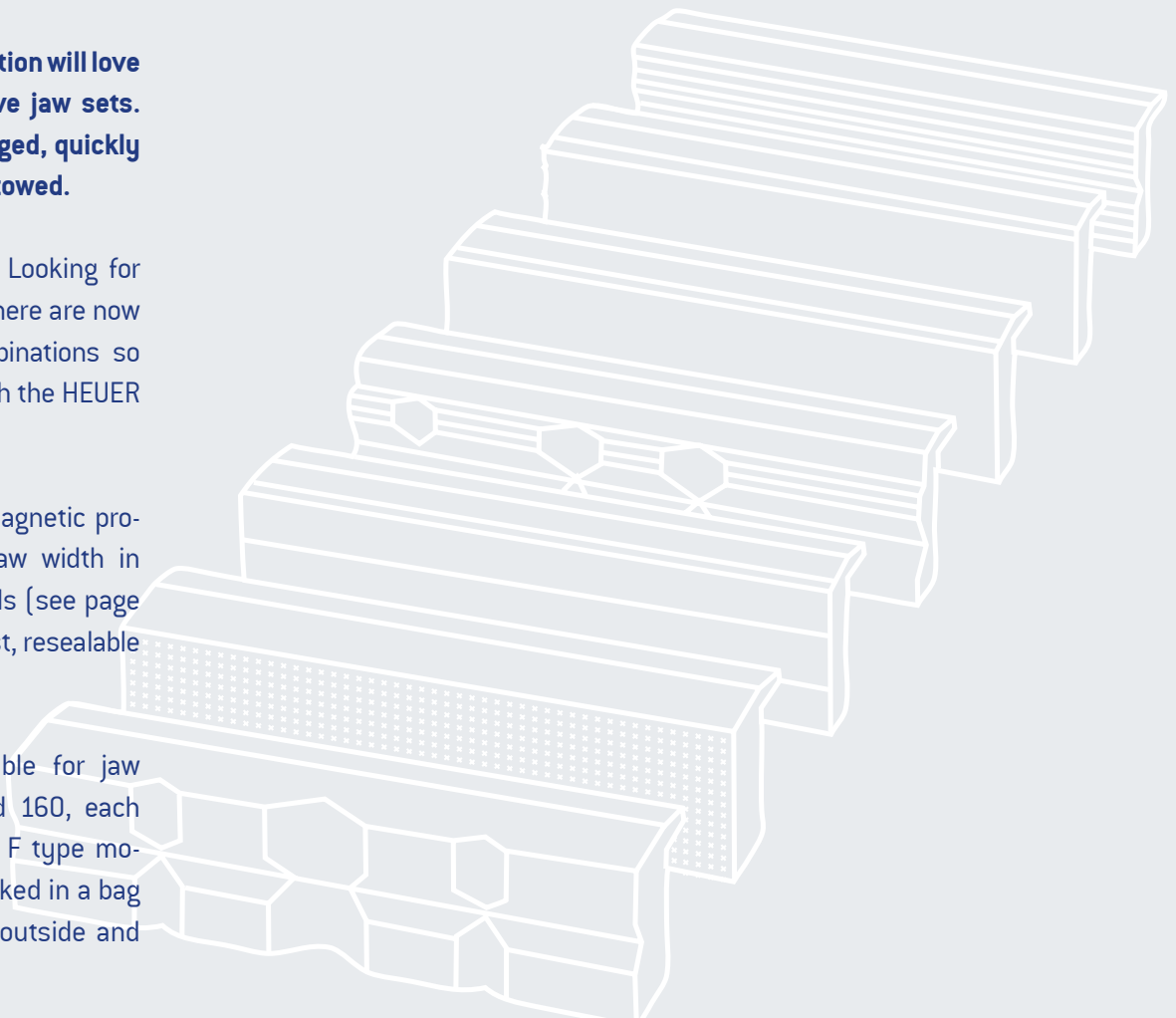
The right clamping surface for each workpiece.

Anyone who loves organisation will love them: our HEUER protective jaw sets. Practical and clearly-arranged, quickly ready-to use and cleanly stowed.

Who hasn't experienced it: Looking for socks, mostly one of two. There are now two sets with useful combinations so that this does not occur with the HEUER protective jaws.

The 3-piece set contains magnetic protective jaws with a 120 jaw width in the N, PP, and G type models (see page 18/19), packaged in a robust, resealable plastic box.

The 4-piece set is available for jaw widths 100, 120, 140 and 160, each containing the G, P, N and F type models. The 4-piece set is packed in a bag which is washable on the outside and sealable with a velcro tape.



3-Piece Set of Magnetic Protective Jaws

Width of jaw/mm	Protective Jaw Types	Item No. 3-piece set
120	N, PP, G	115 122

4-Piece Set of Magnetic Protective Jaws

Width of jaw/mm	Protective Jaw Types	Item No. 4-piece set
100	G, P, N, F	115 001
120	G, P, N, F	115 105
140	G, P, N, F	115 106
160	G, P, N, F	115 160



Collapse ERGONOMICS¹



HEUER Collapsible

For greater workbench space.

Collapse, fold and stow. The ideal complement for the bench-vice. The HEUER Collapsible can be stowed under the workbench with ease creating extra space when not in use. The HEUER Collapsible provides an especially ergonomic solution to clustered workspaces in the workshop. In its working position, the vice is fixed sturdily to the workbench and free of any vibration.

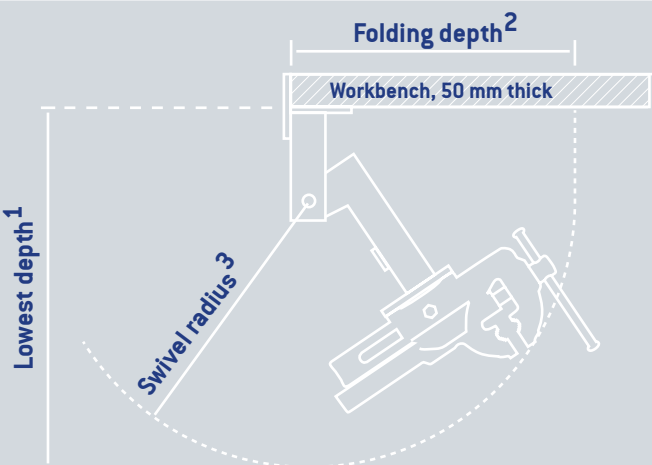
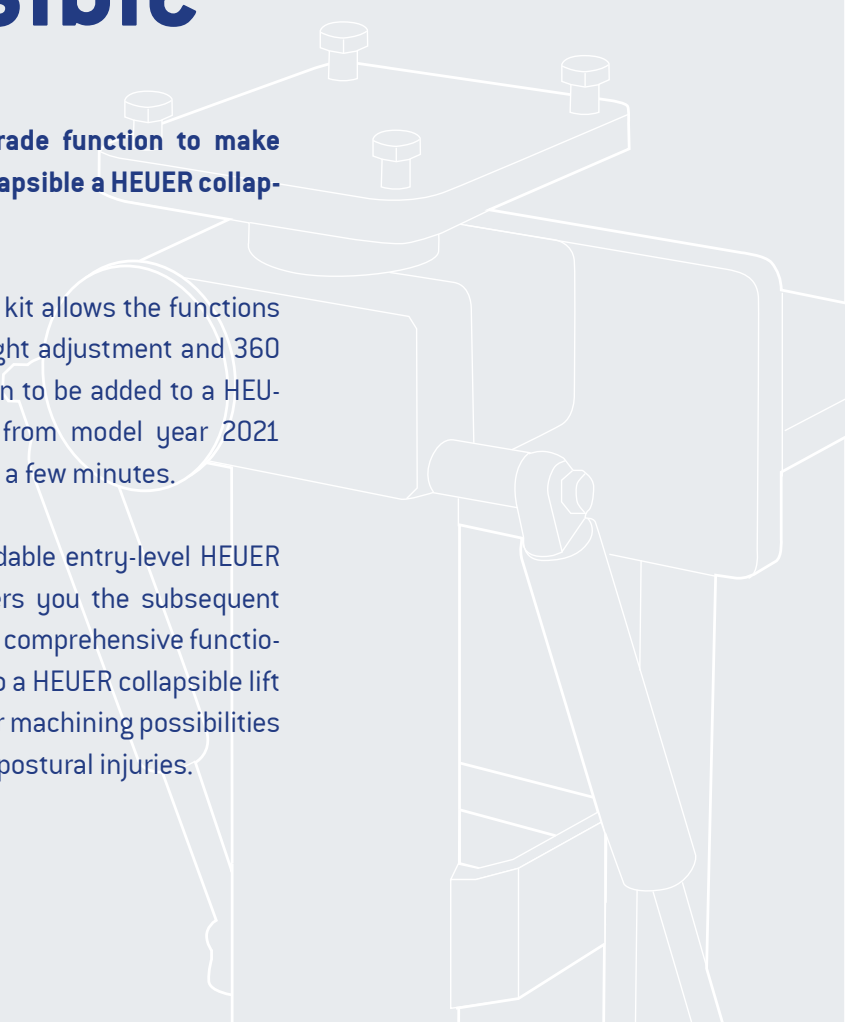
When additional height adjustment and rotating capability are needed, the HEUER Collapsible-Lift (see page 28/29) is the right choice.

For mounting on a 40 mm workbench top we recommend the use of a 10 mm adapter plate.

NEW: The upgrade function to make the HEUER collapsible a HEUER collapsible lift!

The conversion kit allows the functions of 175 mm height adjustment and 360 degrees rotation to be added to a HEUER collapsible from model year 2021 onwards in just a few minutes.

Thus, the affordable entry-level HEUER collapsible offers you the subsequent option of a fully comprehensive functional extension to a HEUER collapsible lift - for even better machining possibilities and to prevent postural injuries.



Adapter plate ⁴ (10 mm)



Conversion kit

Width of jaw/mm*	Lowest depth/mm ¹	Folding depth/mm ²	Swivel radius/mm ³	Art. no. HEUER Collapsible	Art. no. conversion kit	Art. no. adapter plate ⁴
120	590	460	430	105 120	106 121	702 727
140	630	495	470	105 140	106 141	702 727

* Data refers to HEUER Vices.

¹ From lower edge of workbench plate

² From front edge of workbench plate

³ Around point of rotation

⁴ Adapter plate for 40 mm workbench



Lifting, rotating
ERGONOMICS²



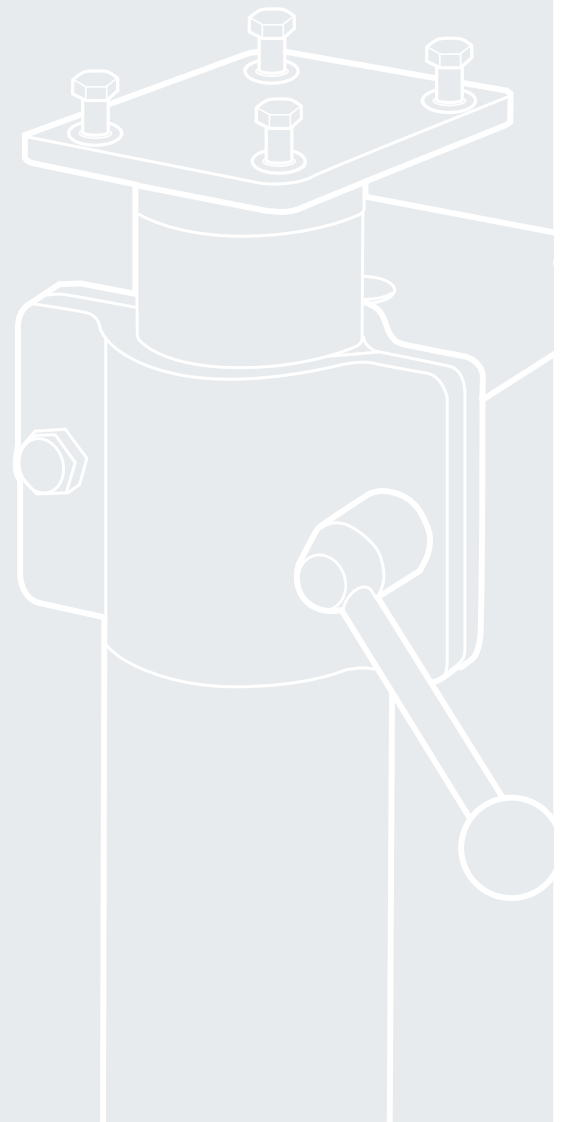
HEUER Lift

HEUER Lift height adjustment for the HEUER Vice. The perfect complement for an ergonomic workplace.

No matter which differing body sizes, tool sizes and type of work to be carried out, HEUER Lift units enable the perfect operating position to be adjusted effortlessly to the vice.

The adaptation of the vice to body size is an especially important factor for trainees in schools or trainee workshops, in order to avoid incorrect body posture and its serious consequences. Items of different height, sizes and shapes requiring a variety of work, are effortlessly accommodated with the HEUER Lift equipment. The vice can be adjusted with ease to a height of 200 mm and rotated through 360°.

A gas shock absorber, specially tuned to the weight of the vice, makes the vice practically weightless. The vice is then locked in place at the optimum working position.



Width of jaw/mm*	Permitted loading/kg	Item No.
100	4 – 10	104 200
120	4 – 10	104 220
140	10 – 16	104 240
160/180	16 – 29	104 260

* Data refers to HEUER Vices. Also suitable for other makes provided that permitted loading weights are observed. When ordering please do not forget details of make and size.



Lift, rotate
ERGONOMICS²⁺
unattached



HEUER Stand-Lift

The HEUER Stand-Lift is the perfect supplement to the Heuer Vice for ergonomic working without a workbench.

No matter which differing body sizes, tool sizes and type of work top be carried out, HEUER Stand-Lift units enable the perfect operating position to be adjusted effortlessly to the vice.

The adaptation of the vice to body size is an especially important factor for trainees in schools or trainee workshops, in order to avoid incorrect body posture and its serious consequences.

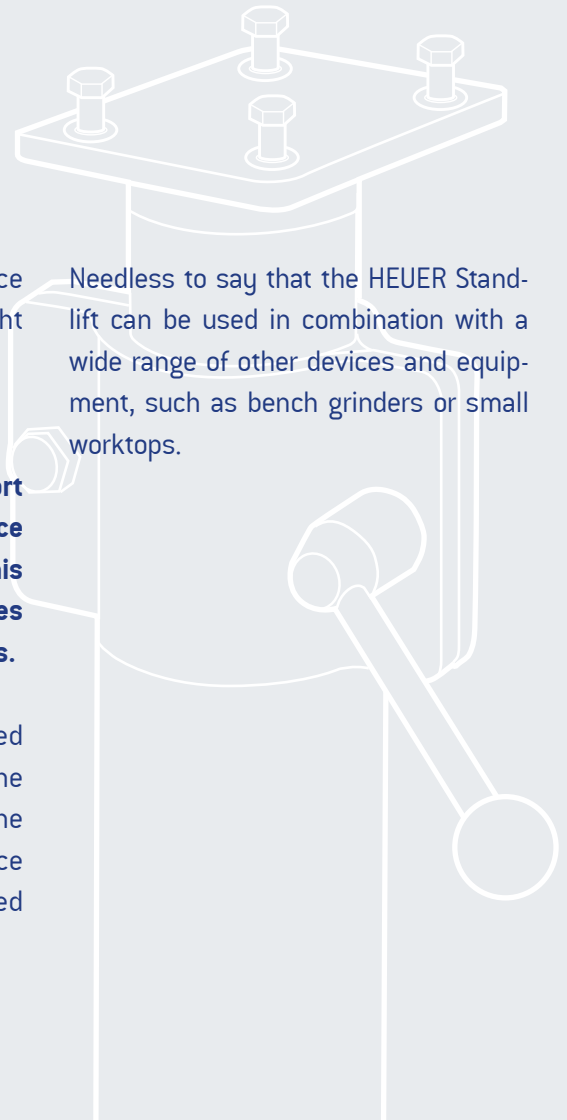
Items of different height, sizes and shapes requiring a variety of work, are effortlessly accommodated with the

HEUER Stand-Lift equipment. The vice can be adjusted with ease to a height of 200mm and rotated through 360°.

The main attraction:
An extremely sturdy stand support makes flexible working in limited space possible, without a workbench. This allows working on bulky work pieces from all sides without any hindrances.

A gas shock absorber, specially tuned to the weight of the vice, makes the vice practically weightless. Once the clamp lever has been released the vice can easily be brought into the desired work position.

Needless to say that the HEUER Stand-lift can be used in combination with a wide range of other devices and equipment, such as bench grinders or small worktops.



The HEUER Stand-Lift is immovably secured at the installation location with four foundation screws.



Width of jaw/mm*	Approx. Weight/kg	Permitted loading/kg	Item No.
120	21	4 – 10	117 120
140	21	10 – 16	117 140
160/180	21	16 – 29	117 160

* Data refers to HEUER Vices. Also suitable for other makes provided that permitted loading weights are observed. When ordering please do not forget details of make and size.



Collapse, lift, rotate

ERGONOMICS³



HEUER Collapsible-Lift

Fold, lift, turn.

Three advantages in one device.

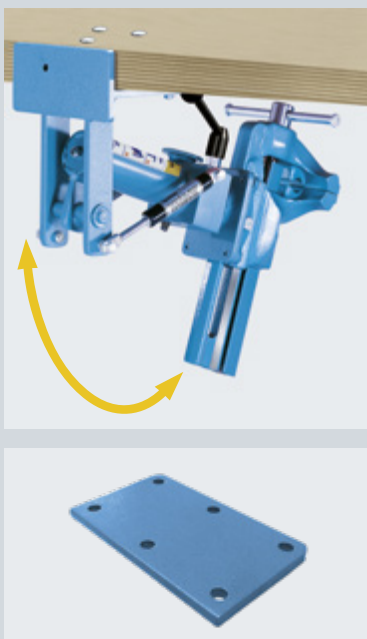
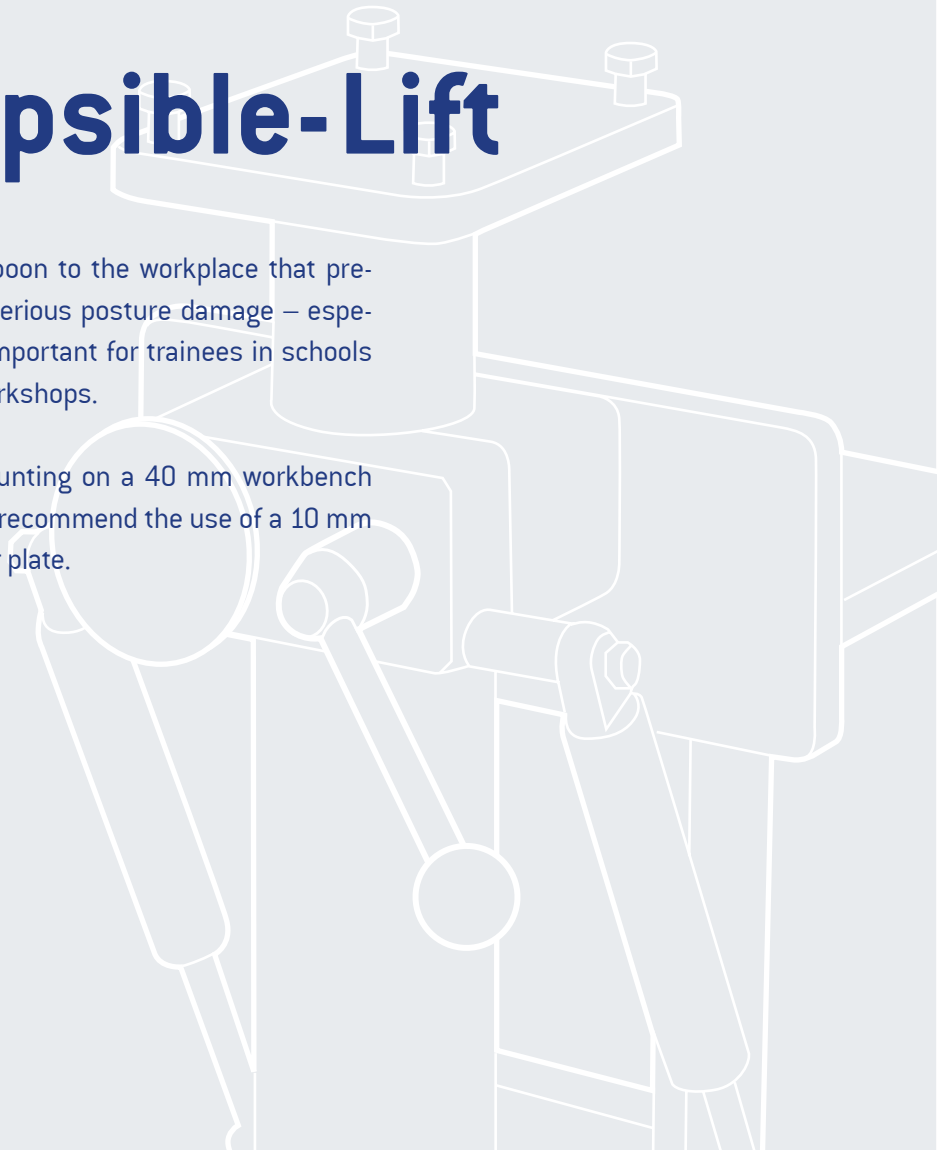
When not in use the vice can be folded beneath the workbench thus freeing the whole workspace for other work.

The adjustability of the vice extends to approx. 175 mm in height and to rotatability of 360°.

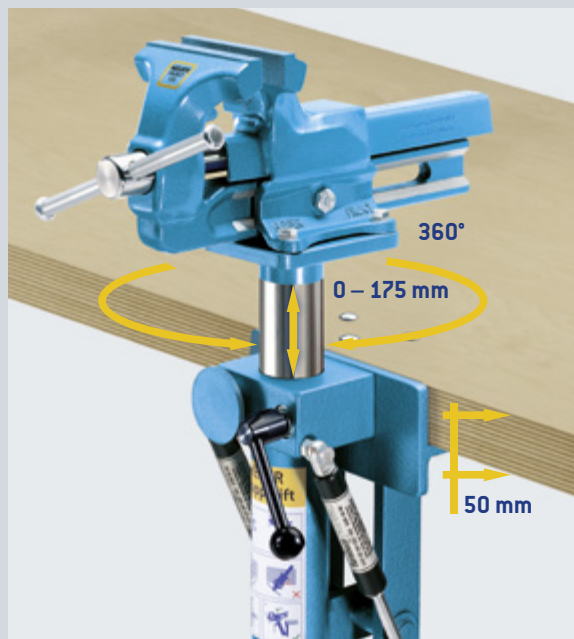
People of different sizes, items of different height, sizes and shapes requiring a variety of work, are effortlessly accommodated with the HEUER Collapsible-Lift equipment.

A real boon to the workplace that prevents serious posture damage – especially important for trainees in schools and workshops.

For mounting on a 40 mm workbench top we recommend the use of a 10 mm adapter plate.



Adapter plate



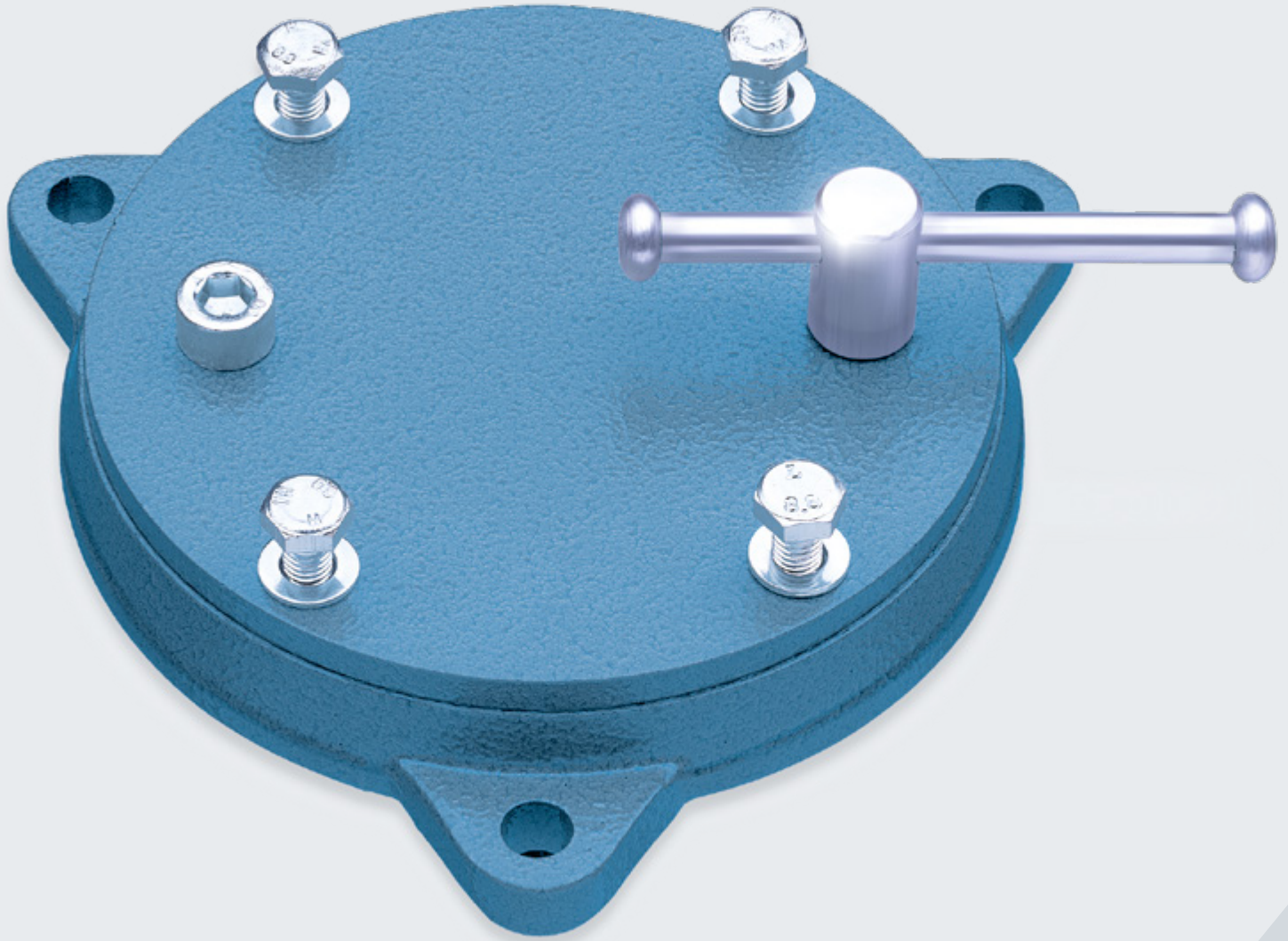
Width of jaw/mm*	Lowest depth/mm ¹	Folding depth/mm ²	Swivel radius/mm ³	Permitted loading/kg	Item No.
120	590	460	430	4 – 10	106 120
140	630	495	470	10 – 16	106 140
Adapter plate			(10 mm)		702 727

* Data refers to HEUER Vices. Also suitable for other makes provided that permitted loading weights are observed. When ordering please do not forget details of make and size.

¹ From lower edge of workbench plate (see illustration S. 23)

² From front edge of workbench plate (see illustration S. 23)

³ Around point of rotation (see illustration S. 23)



Effortless
ERGONOMICS OF MOVEMENT



HEUER Rotary-Table

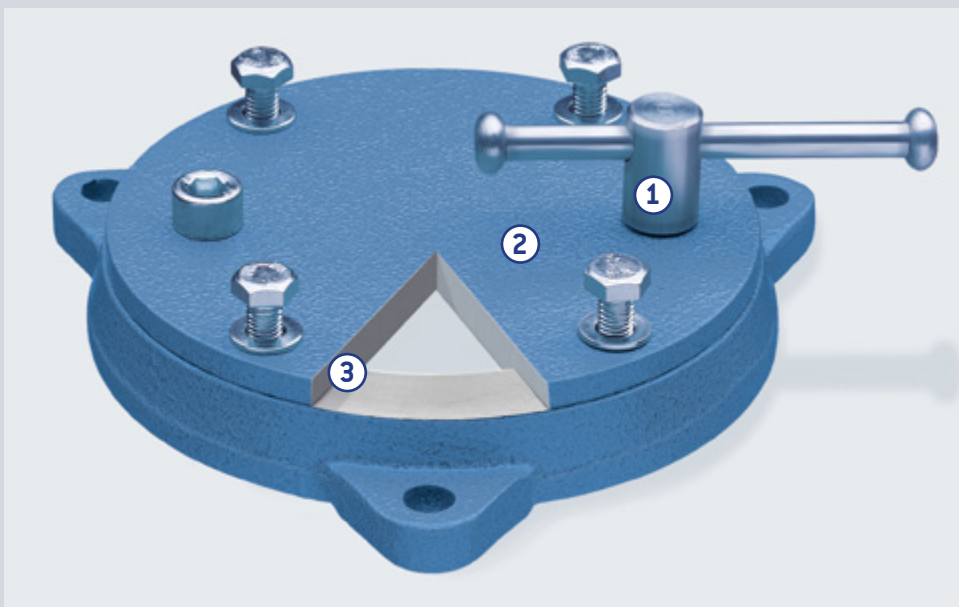
Make working with the HEUER Vice even more flexible.

Thanks to the HEUER Rotary-Table the vice can be rotated 360° on one level exactly in the position that you need for working on a given item. The robust setting with a small spindle key enables the rotary table – and therefore the vice – to be precisely and firmly set to the required position.

Their build determines the uniquely positive features. The HEUER Rotary-Table comes with a covered plate in order to prevent entry of dirt and shavings into the guide. The steel rotating unit and carrying plate fit exactly into

one another and thus assure a precise guide. The guide surfaces are of course conceived to provide as resistance-free an operation as possible.

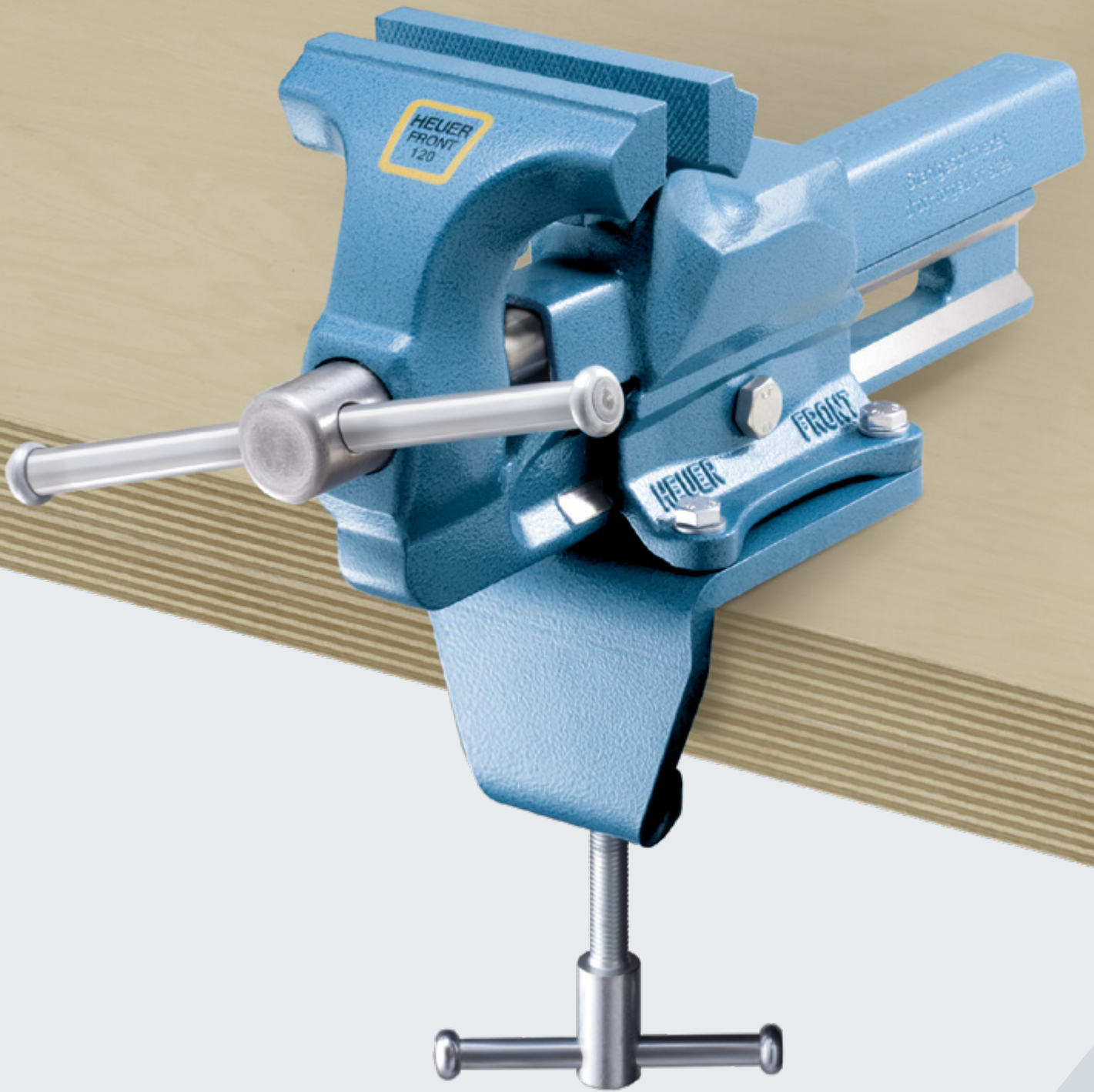
The HEUER Rotary-Table is of an especially flat build to assure great stability. The HEUER Rotary-Table is designed for all vice sizes.



1. Can be set to any position quickly and firmly
2. Covered carrying plate prevents entry of shavings and dirt
3. The steel rotating unit and carrying plate designed for exact guidance

Width of jaw/mm*	Approx. Weight/kg	Item No.
100	1,8	103 100
120	2,5	103 120
140	5,0	103 140
160/180	7,5	103 160

* Data refers to HEUER Vices.



THE CLAMP



HEUER Table-Clamp

Flexible without need for boring.

The HEUER Table-Clamp is perfect for fastening the vice firmly to the working plate. With it, the vice – without the necessity of boring holes – can be mounted and removed from the working plate rapidly and without damage. This frees up space on the work surfaces and avoids the time-consuming mounting and removal of the whole vice from the workbench.



The HEUER Table-Clamp can be installed and removed simply and rapidly with a few movements. The sturdy wing bolt assures easy and safe operation. The four screw receptacles are set to 100 and 120 on the HEUER Vice.

	Width of jaw/mm*	Approx. Weight/kg	Table top thickness/mm	Item No.
100	1,0	10 – 60	119 100	
120	1,7	10 – 60	119 120	

* Data refers to HEUER Vices.



The flexible
2 IN 1 COMBINATION



HEUER rotary clamp

Two in one.

The HEUER rotary clamp combines the best of two useful additions to the HEUER vice:

On the one hand the rotary table, with which the vice can be freely rotated by up to 360° in a plane. Thanks to the robust locking with a small handle to the tried and tested HEUER principle, the swivel bracket and the rotary table can be fixed and securely locked precisely in the required position.

On the other hand the HEUER table clamp, to fix the vice flexibly to any worktop up to 60 mm thick – quickly,

without damage or drilling holes. This creates space on the worktop and avoids complicated and time-consuming mounting and dismantling of the whole vice on the workbench.

With the HEUER rotary clamp, the vice is extended by two additional extremely useful functions for everyday use with only one accessory.

The particularly positive properties correspond to those of the two individual products. Just like the HEUER rotary table, the HEUER rotary clamp has a closed mounting plate. This prevents dirt and machining chips from getting into the guide.

The ring mounting and mounting plate fit together precisely, and ensure precise control. The guide surfaces are naturally machined to ensure the least resistance possible during operation.

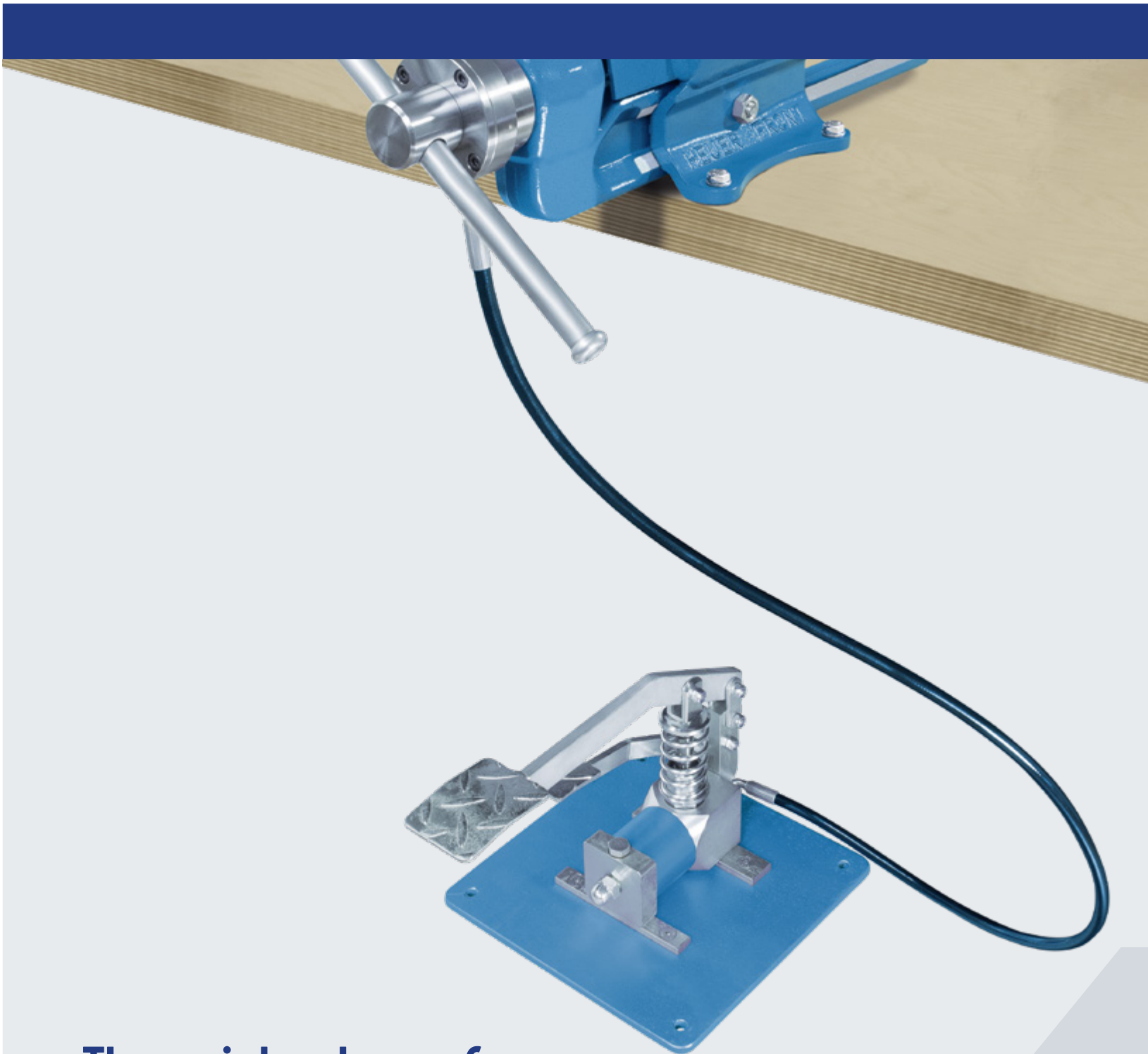
The HEUER rotary clamp is available for vice sizes 100 and 120.



The HEUER rotary clamp can be mounted and dismantled quickly with a few easy steps. The powerful clamp spindle with the tried and tested HEUER handle ensures safe and easy operation. The four screw retainers are matched to the HEUER vice sizes 100 and 120.

Width of jaw/mm*	Approx. Weight/kg	Table top thickness/mm	Item No.
100	1,0	10 – 60	119 103
120	1,7	10 – 60	119 104

* Data refers to HEUER Vices.



The quick release for
MASS PRODUCERS
and large work pieces



HEUER short stroke module

For everyone processing identical work pieces in mass, or needing a ,helping hand' for heavy, cumbersome work pieces. Keep your hands free to increase productivity!

The HEUER short stroke module guarantees a true increase in productivity. No need to use the strut spanner to process small work pieces up to 5 mm simply using the foot pedal. Whether fixing or releasing.

The HEUER short stroke module is designed as an accessory for the HEUER vices. It consists of a special spindle, the hydraulic module for the spindle head, a hydraulic hose and a hydraulic foot pump with two pedals – one with a large lever for securing, and a smaller one for releasing.

The mode of operation is as simple as it is smart: The HEUER short stroke module uses the spring deflection of the compression spring in the precision spring bearing. This is approx. 5 mm. The ,play' uses the hydraulic module on the spindle head to push the front jaw towards the back jaw without rotating the spindle.

The HEUER short stroke module is thus capable of creating pressure of more than 3,5 tonnes!

When the ,release' pedal is activated, the hydraulic pressure is decreased and the compression springs are pushed apart.

The spindle and vice can still be operated manually following set-up. The thread ends on the strut spanner allow it to be

removed if working on the vice using the short stroke module is cumbersome.

The HEUER short stroke module keeps your hands free, and significantly reduces the time required to clamp and unclamp the work piece.

Even with cumbersome or heavy work pieces where both hands are needed for clamping, the HEUER short stroke module replaces the ,third hand' that is otherwise needed to tension the spindle.

The HEUER short stroke module is available for vice sizes 140 and 160.



The HEUER short stroke module allows a vice to be converted into a true ,quick release' clamp in no time. All the set-up parts required are supplied with the set.

The spindle and vice can still be operated manually following set-up.

All set components can be ordered individually, for example if there is a hydraulic pump in place.



Width of jaw/mm *	Approx. Weight/kg	tensioning stroke/mm	Item No.
140	25	5	197 108
160	25	5	197 109

* Data refers to HEUER Vices.

The bench-vice history

An indispensable tool and its origin.

In the mists of the distant past, whoever came upon the idea of fixing items to be worked on in such a way that they would not move under the pressure of sawing, filing and boring, is unknown. The astonishing fact is that today in the computer age, the vice as a purely mechanical tool is indispensable; and no workshop crammed with electronic devices can do without it.

A decisive step in the development of this indispensable tool into its present form was the replacement of clamping techniques using wedge and hammer by clamps with threads

in the middle ages. The disadvantage: the moving jaws could only be guided radially so that the clamped items would more or less tilt.

It was only with the introduction of the parallel vice in 1750 on which the movable jaws were guided on horizontal adjustable slots that a breakthrough was made to the optimal application.

In 1830 in England the first cast iron vice was produced. Liquid iron could be transformed into any shape easily. When pouring, air pockets often occurred within the cast, so-called cavities. The structure was therefore porous and brittle. The result: insufficient

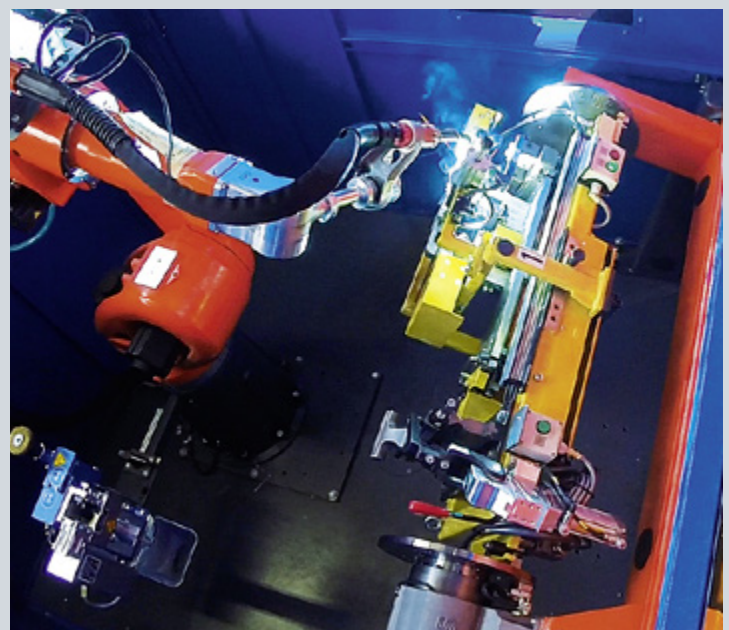
resistance for harder tasks, causing breakage. For this reason, for example, parts vital for safety in the car industry and high-grade unbreakable vices are made of steel. The structure of the steel is made homogeneous through forging. With the introduction of the jackhammer with its heavy hammering capability and the use of forges with strict tolerances, the problem of accurate shaping was solved.

The birth of the HEUER Vice

When Josef Heuer, the experimenter and inventor from Iserlohn, invented a new build of drop-forged vice with its revolutionary dual-prism guide track



Spindle production



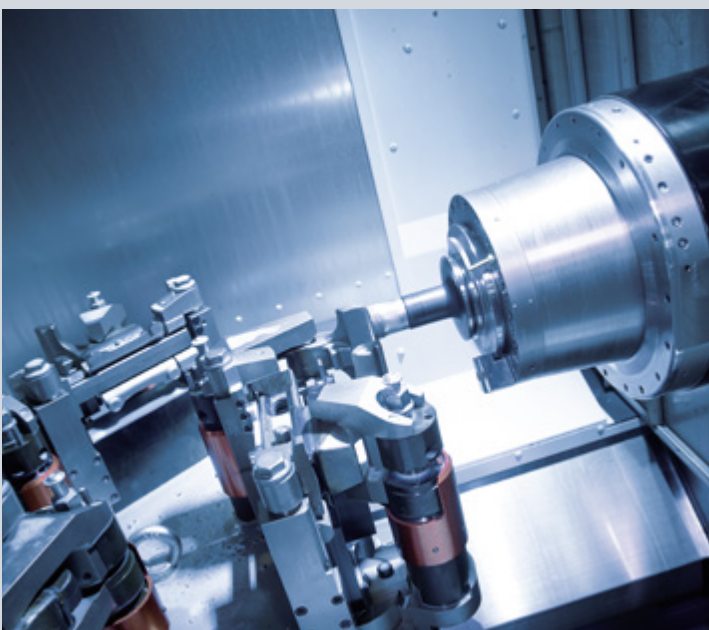
Welding robot

in 1925, the Brockhaus company in Plettenberg, Sauerland, was already one of the largest drop-forges in Germany. The significance of the invention was recognised as far-sighted. The patent was applied for in 1927, and thus started the production of this vice. This marked the arrival of the world famous and million-selling HEUER Vice.

A successful beginning and development

The chronicle says: „in the same year, with a great deal of effort a new vice was successfully exhibited at the Leipzig autumn fair for the first time, and considerable orders for it was the result“. No wonder then, that the guar-

anteed unbreakable pure steel „HEUER Primus“ reached record distinction at the top of its class. This success did not allow Brockhaus technicians to sit on their laurels. They developed a vice along with the HEUER Primus, which opened at the rear, a vice that opened at the front – in the direction of the operator. Thus, clamping and work on even large items vertically in front of the workbench became possible. The new model was appropriately named HEUER Front. The operability of the HEUER Front was further improved on and its versatility increased. In this way the dual-prism guide thread provided a sturdy, precise and fast clamping force and the forged pipe-gripping jaws for



Partial view of training centre



Quality control in the production centre 1

additional applications. Dedicated tubular vices then become superfluous.

The path to a perfect tool

After the second world war, work begun at Brockhaus on new products with great dedication. At the time of the German recovery, vices were in greater demand than ever. Among other things, the etiquette „Made in Germany“ for technical products made for worldwide success. A word on „Made in Germany“: HEUER Vices have been made in Germany alone for more than 80 years.

Advanced production methods, particularly in welding and forging, spurred

the inventor Josef Heuer to seek a new patent in 1948. Today's HEUER Vice is based on the concept of this patent.

In parallel to the perfection of the production methods, Brockhaus technicians worked on the improvement of models according to the principle: „small details have great consequences“. Through a pressure disc, spring and snap ring for example, the spindle was thus positioned so that lost motion was eliminated.

These days the HEUER Vice has a centrally adjustable guide, forged jaws as standard, a protected spindle location, and, because of its slimness due to its drop-forged guide rails – an ad-

vantageous low clamping capability.

The newest product, the HEUER compact, is also a testament to Brockhaus Heuer's continuing leadership in innovation.

Equipped with a quick-adjustment HEUER Quicklaunch, ultra-flat but wide 120 mm jaws and only weighing 4.5kg, it has a robust clamping force of 10 kN.

The highlight: The HEUER Compact is available in a carrying case kit with a pre-installed table clamp and different, interchangeable jaws. The first vice in a case! Ideal for mobile use (see also page 16–17).

We will continue to write the story of the vice in the future as well.



Fully automatic depot and distribution centre



Cutting robot

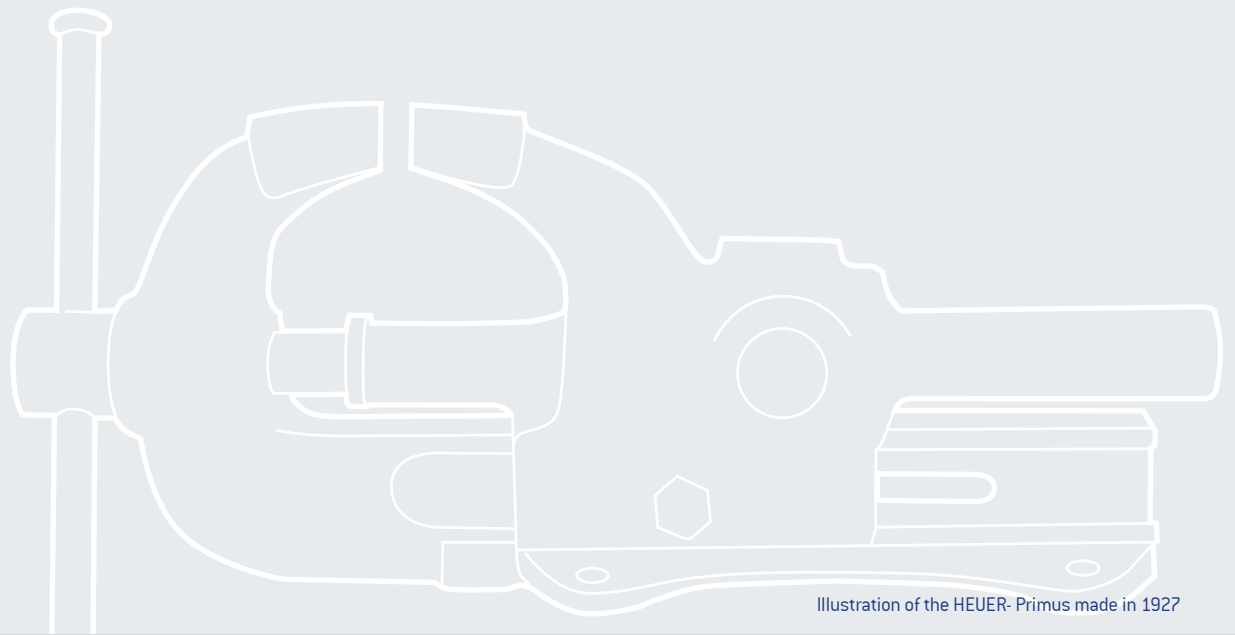


Illustration of the HEUER- Primus made in 1927



Powder coating unit



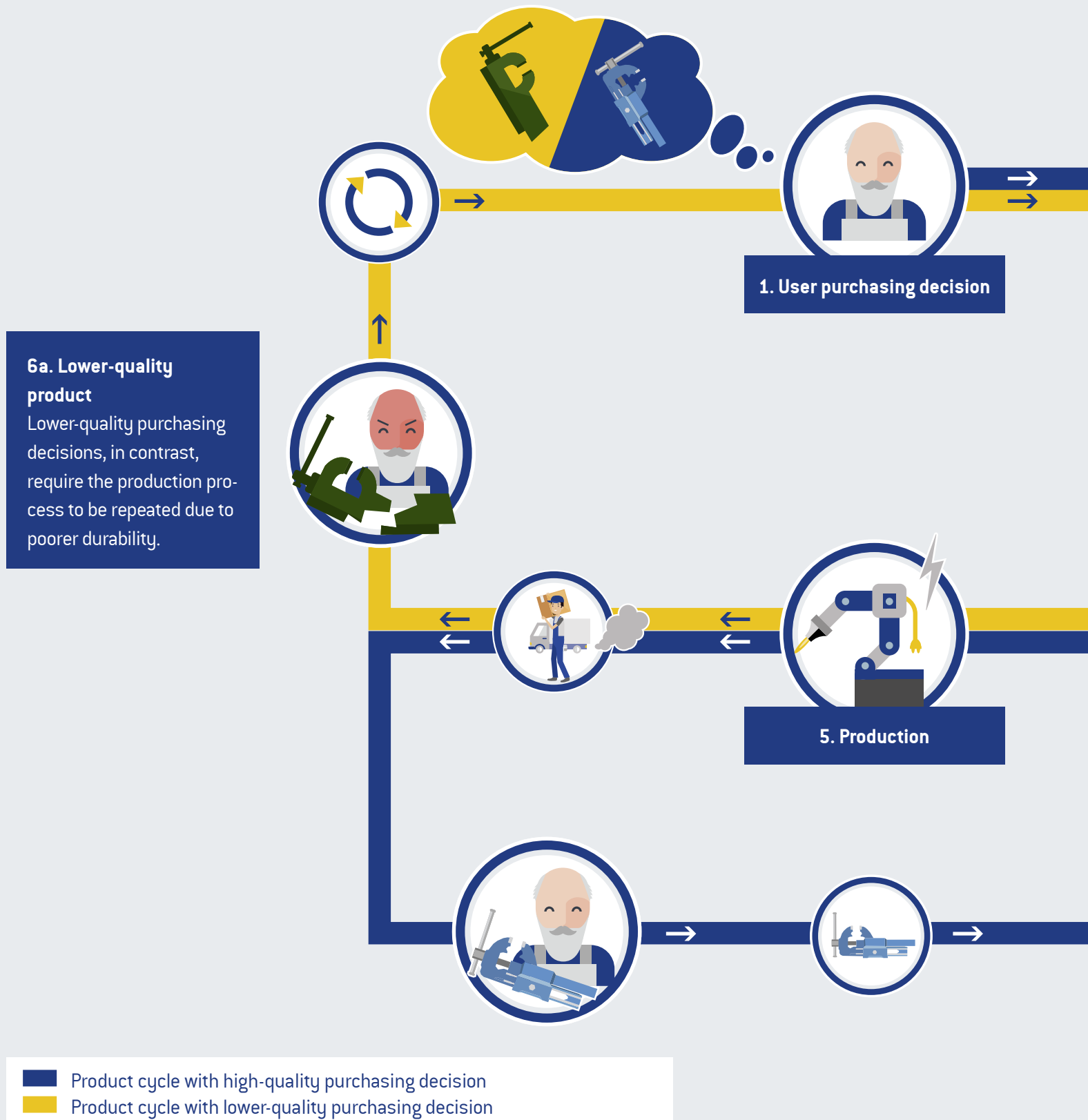
pick@work

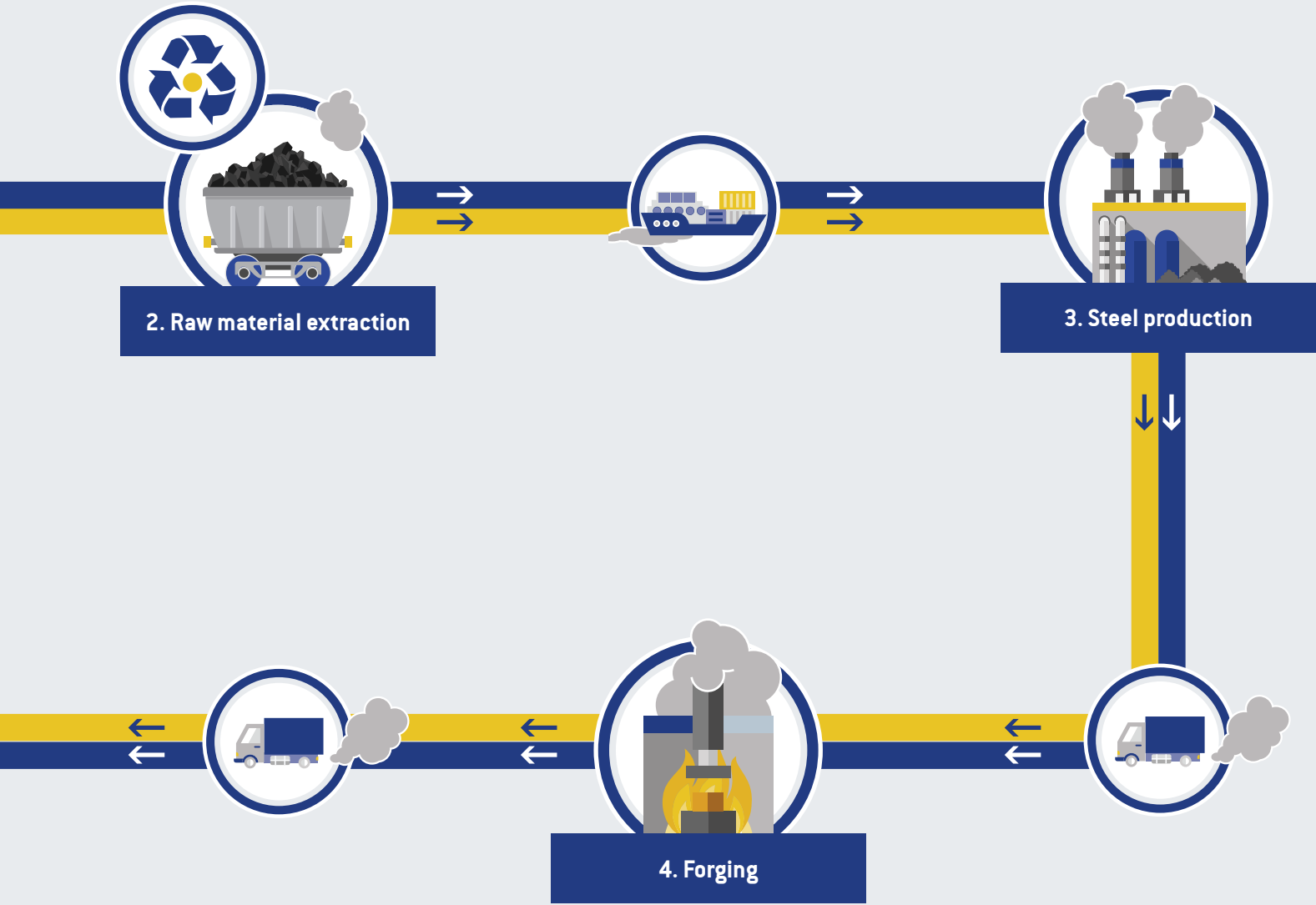


Distribution centre

Sustainable purchasing decision

With the knowledge and good feeling that comes from knowing you have a tool that can be passed on from one generation to the next.





6b. Lifelong quality – across generations

Environmental awareness starts with users making sustainable purchasing decisions. Buying high-quality products significantly reduces environmental impact, since it requires environmentally harmful processes to be carried out only once.

Made in Germany

Made in Germany – for many, an indication of the highest quality. But few understand the origins of the phrase “Made in Germany”, and what it stood for.

Originally used to designate lower-quality goods, today “Made in Germany” is considered a seal of quality. At the first World Fairs in the 18th century, German products were considered to be of low quality. Great Britain introduced the “Made in Germany” seal in 1887 to differentiate these goods. Shortly thereafter, however, German companies began to develop higher-quality and more innovative products, turning the expression into a seal of quality. Today, “Made in Germany” stands not only

for manufacturing in Germany, but in particular for quality as well.

At Brockhaus HEUER, we have been embodying this level of quality since we began production 125 years ago. The values that “Made in Germany” stands for are highly important to us.

Precision, perfection, and discipline

Precision is always our primary focus when developing and manufacturing our products. Ongoing controlling and development of our products are our particular focus. Quality controls of both individual parts and the finished product are conducted regularly, since

this is the only way we can ensure the perfection of our products.

Reliability, trust, and durability

Only satisfied customers become repeat customers. Because of this, all of our employees work each day to manufacture durable, reliable products, as this is the only way to ensure customer trust and satisfaction. The only way to improve is to recognise potential areas of optimisation. That is why customer feedback is so important to us.

Creativity, design, and innovation

We not only consistently develop our



Made in Germany – stands for creativity and innovation.



Made in Germany – stands for precision and perfection.

products, but also regularly improve and expand our manufacturing processes through investment. Improved manufacturing processes help us ensure we can deliver an optimal product to our customers quickly.

Product quality, performance, and resilience

Our products always conform to the highest quality standards. This is the only way we can ensure they are safe and reliable in use, a true colleague on the job.

However, “Made in Germany” stands not only for outstanding products, but also

for social responsibility and sustainable values, like supporting and protecting our environment and human rights.

This is what makes us who we are. We are proud of our values.

And, because these values are important to us, we produce our products in Germany.



Made in Germany – is a symbol for social security.



Made in Germany – stands for protecting our environment.

www.heuer.de

www.heuer.de offers all sorts of information about the company, products, customer opinions and useful tips.

People interested in the company itself can learn about the vice's origins and current production at this multi-lingual website. Furthermore, there are tips on proper body posture and tool arrangement, maintenance and warning messages in PDF files, catalogues, installation instructions, product images and datasheets available for download. There are even background images and screen savers for fans in the support and/or download area. Anyone wishing to take an overview of the opinions can

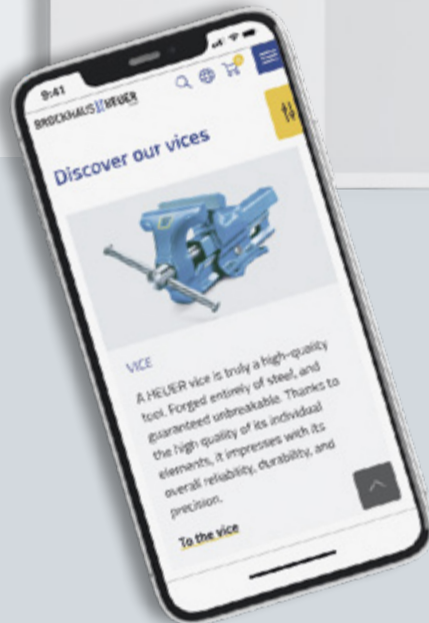
find statements about our products and services in the "field reports" area.

Our videos show, among other things, the production in 1947 and today, work flow from the viewpoint of a workpiece, viewed directly from a robot, and disassembly, maintenance and installation of a vice.

If, contrary to expectations, the information you are looking for is not on www.heuer.de you can reach us using the contract form there or simply via one of the other provided communication methods, such as phone or e-mail. Take a look around!

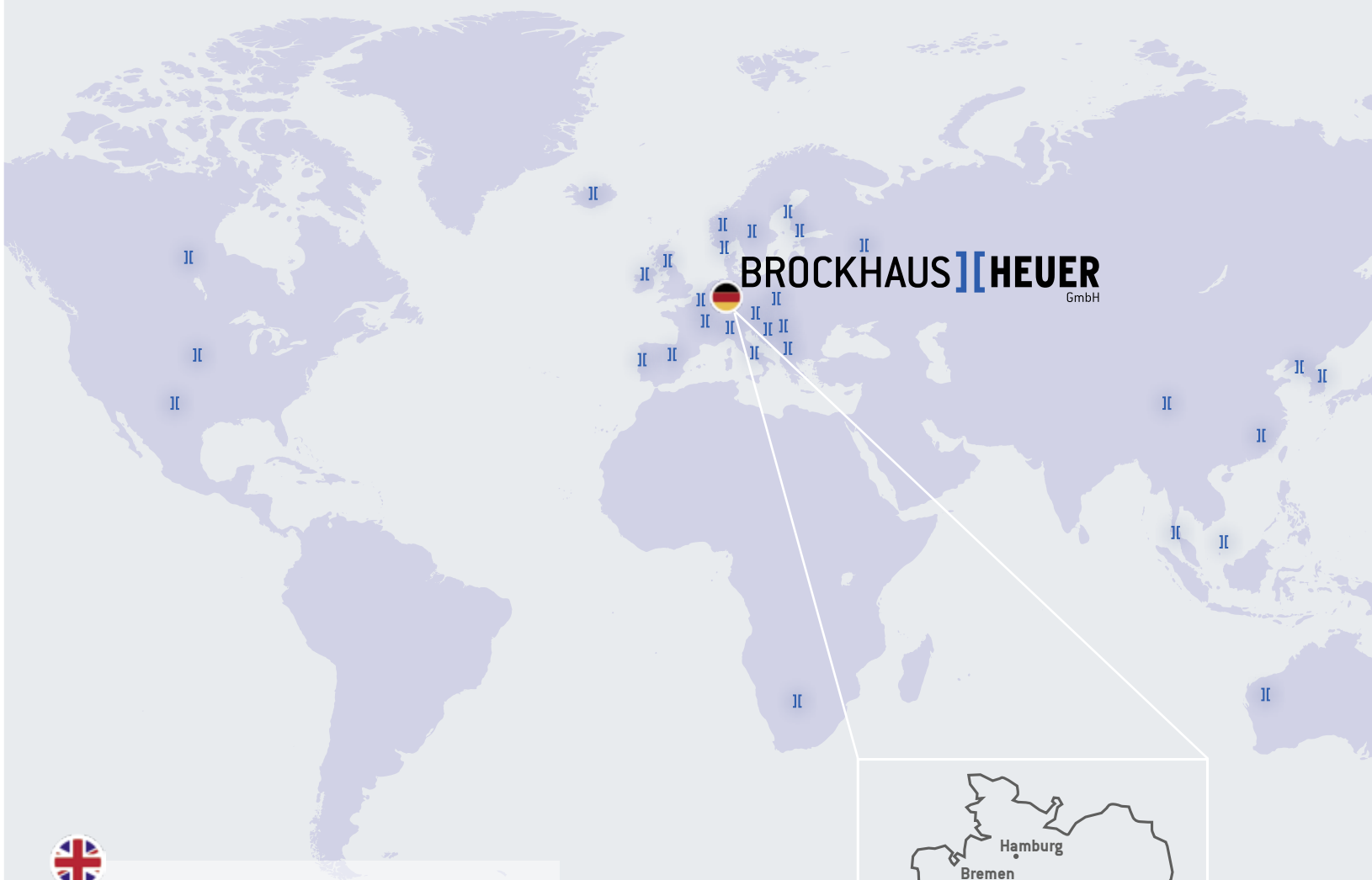


Follow us on our social media channels



www.heuer.de/en

Heuer Worldwide



BROCKHAUS HEUER GmbH

Oestertalstraße 54

58840 Plettenberg

GERMANY

fon: +49 (0) 23 91 / 60 29-0

fax: +49 (0) 23 91 / 60 29-29

info@heuer.de

www.heuer.de



Illustrations not colour matched, colour variations possible. Technical alterations subject to change without notice.



long-lasting
precise
reliable
resilient
robust
safe
innovative
fast
the Original



www.heuer.de